

The POG Technique for Modeling Planetary Gears and Hybrid Automotive Systems

(Draft paper)

Roberto Zanasi

Information Engineering Department
University of Modena e Reggio Emilia
Via Vignolese 905
41100 Modena, Italy
roberto.zanasi@unimore.it

Federica Grossi

Information Engineering Department
University of Modena e Reggio Emilia
Via Vignolese 905
41100 Modena, Italy
federica.grossi@unimore.it

Abstract—In this paper the Power-Oriented Graphs (POG) technique is used for modeling planetary gears and hybrid automotive systems. Some basic properties of the POG technique are firstly given. An extended dynamic model of a planetary gear with internal elasticity is presented. Then a POG congruent state space transformation is used to transform and reduce the system when the elasticities go to zero. The obtained reduced model is used as central element of an hybrid automotive power structure (endothermic engine, multi-phase synchronous motor and vehicle dynamics). Simulation results will be reported in the final full paper.

I. INTRODUCTION

Nowadays, the planetary gears are key elements for the design of new hybrid power structures in the automotive area. In this paper, some different dynamic models for these systems are obtained using the the POG modeling technique.

(References and a detailed description of the work done in the literature in this field will be given in the final full paper).

The paper is organized as follows: Sec. II describes the basic properties of the POG modeling technique. Sec. III and Sec. IV show, respectively, the POG dynamic models of full and reduced planetary gears, and of an hybrid automotive power structure composed by an endothermic engine, a multi-phase synchronous motor and the vehicle dynamics. Finally, in Sec. V some simulation results are reported.

II. POWER-ORIENTED GRAPHS BASIC PRINCIPLES

The Power-Oriented Graphs technique, see [1] and [2], is suitable for modeling physical systems. The POG block schemes are normal block diagrams combined with a particular modular structure essentially based on the use of the two blocks shown in Fig. 1.a and Fig. 1.b: the *elaboration block* (e.b.) stores and/or dissipates energy (i.e. springs, masses, dampers, capacities, inductances, resistances, etc.); the *connection block* (c.b.) redistributes the power within the system without storing nor dissipating energy (i.e. any type of gear reduction, transformers, etc.). The e.b. and the c.b. are suitable for representing both scalar and vectorial systems. In the vectorial case, $G(s)$ and K are matrices: $G(s)$ is always a square matrix composed by positive real transfer functions;

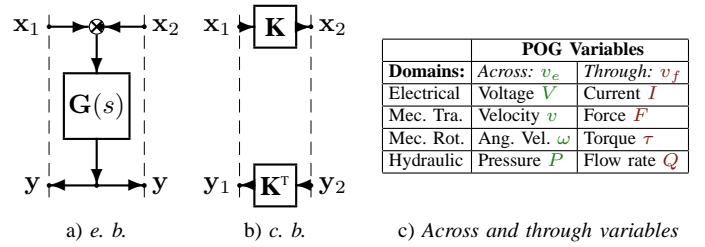


Figure 1. POG basic blocks and variables: a) *elaboration block*; b) *connection block*; c) *across and through variables*.

matrix K can also be rectangular. The circle present in the e.b. is a summation element and the black spot represents a minus sign that multiplies the entering variable. The main feature of the Power-Oriented Graphs is to keep a direct correspondence between the dashed sections of the graphs and real power sections of the modeled systems: the scalar product $x^T y$ of the two *power vectors* x and y involved in each dashed line of a power-oriented graph, see Fig. 1, has the physical meaning of *the power flowing through that particular section*. The Bond Graphs technique, see [3], is based on the same idea, but it uses a different and specific graphical representation.

The main energetic domains encountered in modeling physical systems are the electrical, the mechanical (translational and rotational) and the hydraulic, see Fig. 1.c. Each energetic domain is characterized by two *power variables*: an *across-variable* v_e defined between two points (i.e. the voltage V), and a *through-variable* v_f defined in each point of the space (i.e. the current I). Each Physical Element (PE) interacts with the external world through the power sections associated to its terminals. A Physical Element is connected *in series* when its terminals share the same through-variable v_f : see the physical element and the corresponding POG scheme in Fig. 2.a. A Physical Element is connected *in parallel* when its terminals share the same across-variable v_e : see the physical element and the POG scheme in Fig. 2.b. An example of POG modeling where a C parallel element is connected with an R series element is shown in Fig. 3. There

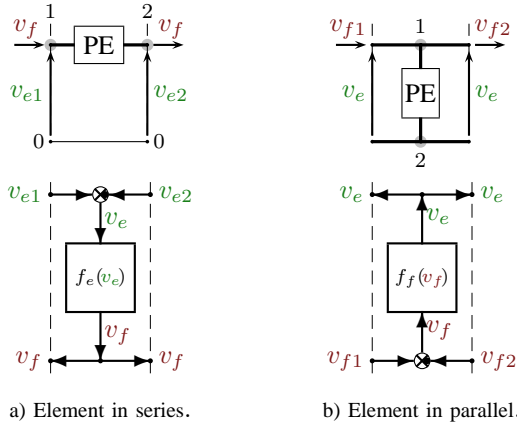


Figure 2. POG representations of Physical Elements (PE): a) connected in series (inputs v_{e1} , v_{e2}); b) connected in parallel (inputs v_{f1} , v_{f2}).

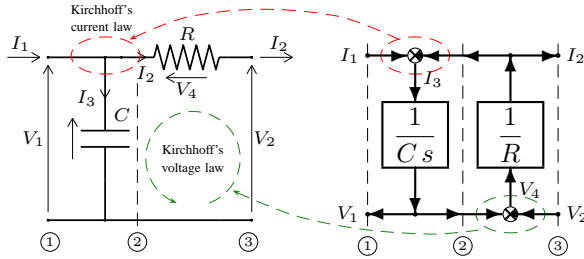


Figure 3. POG modeling of an electrical RC circuit.

is a direct correspondence between physical power sections and dashed sections in the POG model. Note: the summation elements present in the elaboration blocks are a mathematical description of the current and voltage Kirchhoff's laws applied to the considered electrical system.

Another important property of the POG technique is the direct correspondence between the POG block schemes and the corresponding state space dynamic equations. For example, the POG scheme shown in Fig. 4 can be represented by the state space equations (1) where the *energy matrix* \mathbf{L} is symmetric and positive definite: $\mathbf{L} = \mathbf{L}^T > 0$. When an eigenvalue of matrix \mathbf{L} tends to zero (or to infinity), system (1) degenerates towards a lower dimension dynamic system. In this case, the dynamic model of the “reduced” system, see (2), can be directly obtained from (1) using a simple “congruent” transformation $\mathbf{x} = \mathbf{T}\mathbf{z}$ (\mathbf{T} is constant) where $\bar{\mathbf{L}} = \mathbf{T}^T \mathbf{L} \mathbf{T}$, $\bar{\mathbf{A}} = \mathbf{T}^T \mathbf{A} \mathbf{T}$ and $\bar{\mathbf{B}} = \mathbf{T}^T \mathbf{B}$.

III. POG MODELING OF A PLANETARY GEAR

Let us consider the planetary gear shown in Fig. 5 together with the main parameters of the system. The extended POG dynamic model of the considered planetary gear is shown in Fig. 6: the carrier, the planets and the ring interact each other through the two elastic elements K_{cr} and K_{sc} . The corresponding state space dynamic equations are shown in Fig. 7:

$$\bar{\mathbf{L}} \dot{\bar{\mathbf{x}}} = -\bar{\mathbf{A}} \bar{\mathbf{x}} + \bar{\mathbf{B}} \mathbf{u}, \quad \mathbf{y} = \bar{\mathbf{B}}^T \bar{\mathbf{x}} \quad (3)$$

The POG linear system (3) satisfies the following properties:

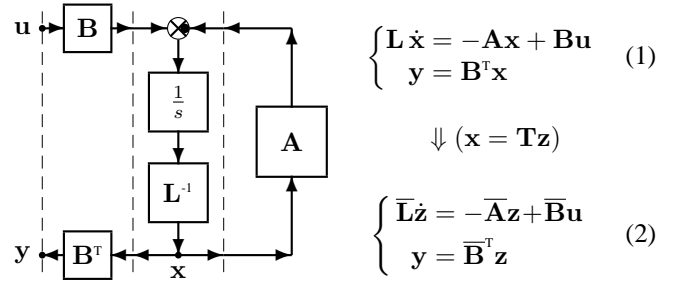


Figure 4. POG block scheme of a generic dynamic system.

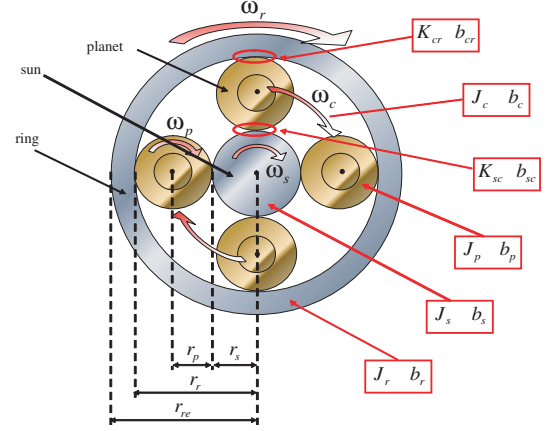


Figure 5. Planetary gear and related parameters.

1) the energy E_s stored in the system and the dissipating power P_d can be expressed as quadratic functions of matrices $\bar{\mathbf{L}}$ and $\bar{\mathbf{A}}_s$:

$$E_s = \frac{1}{2} \bar{\mathbf{x}}^T \bar{\mathbf{L}} \bar{\mathbf{x}}, \quad P_d = \bar{\mathbf{x}}^T \bar{\mathbf{A}}_s \bar{\mathbf{x}},$$

where $\bar{\mathbf{A}}_s = (\bar{\mathbf{A}} + \bar{\mathbf{A}}^T)/2$ is the symmetric part of the *power matrix* $\bar{\mathbf{A}}$. The skew-symmetric part $\bar{\mathbf{A}}_w = (\bar{\mathbf{A}} - \bar{\mathbf{A}}^T)/2$ of matrix $\bar{\mathbf{A}}$ represents the power redistribution within the system. One can easily verify that all the dissipating parameters of the system appear only within matrix $\bar{\mathbf{A}}_s$, while matrix $\bar{\mathbf{A}}_w$ is completely defined by all the connection parameters;

2) all the loops of any POG scheme which graphically represents system (3) contain always an “odd” number of minus signs “-” (i.e. the black spots in the summation blocks);

3) the direction of the power flowing through a section of the POG schemes (i.e. the dashed lines) is positive if an “even” number of signs “-” is present along any path which goes from the input to the output of the section. Note, for example, that in Fig. 6 the power is entering the system in the power section ③ and it is going out in the power section ④.

For certain applications the POG model of Fig. 6 can be too much detailed. In these cases it can be of interest to find the reduced model when the stiffness coefficients K_{cr} and K_{sc} tend to infinity. Applying to system (3) the following

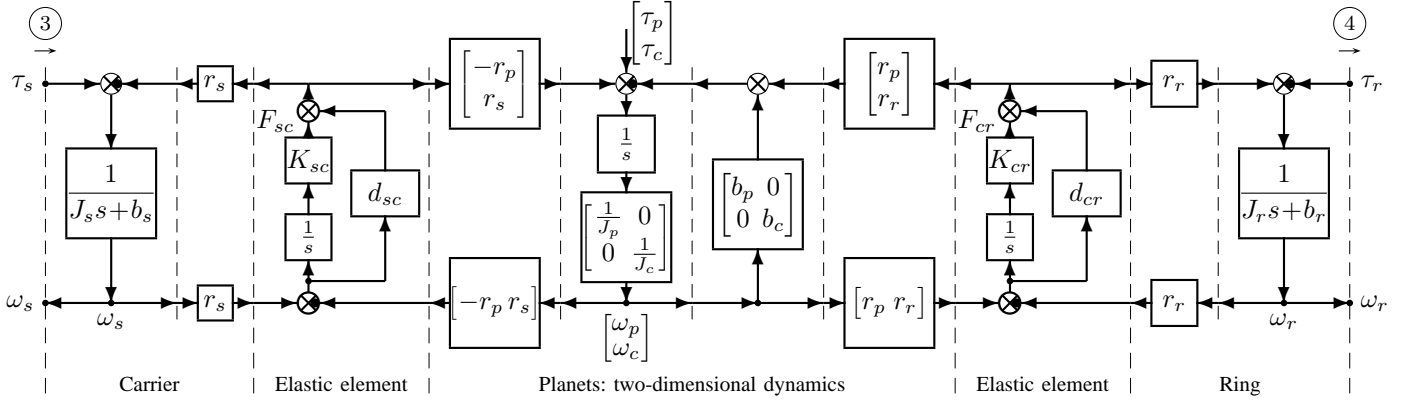


Figure 6. The POG model of the considered planetary gear: the carrier, the planets and the ring interact through elastic elements.

$$\underbrace{\begin{bmatrix} J_s & 0 & 0 & 0 & 0 & 0 \\ 0 & \frac{1}{K_{sc}} & 0 & 0 & 0 & 0 \\ 0 & 0 & J_p & 0 & 0 & 0 \\ 0 & 0 & 0 & J_c & 0 & 0 \\ 0 & 0 & 0 & 0 & \frac{1}{K_{cr}} & 0 \\ 0 & 0 & 0 & 0 & 0 & J_r \end{bmatrix}}_{\bar{\mathbf{L}}} \underbrace{\begin{bmatrix} \dot{\omega}_s \\ \dot{F}_{sc} \\ \dot{\omega}_p \\ \dot{\omega}_c \\ \dot{F}_{cr} \\ \dot{\omega}_r \end{bmatrix}}_{\dot{\bar{\mathbf{x}}}} = - \underbrace{\begin{bmatrix} b_s + r_s^2 d_{sc} & r_s & r_s d_{sc} r_p & -r_s^2 d_{sc} & 0 & 0 \\ -r_s & 0 & -r_p & r_s & 0 & 0 \\ r_s d_{sc} r_p & r_p & b_p + d_{sc} r_p^2 + d_{cr} r_p^2 & -r_s d_{sc} r_p + d_{cr} r_p r_r & r_p & -d_{cr} r_p r_r \\ -r_s^2 d_{sc} & -r_s & -r_s d_{sc} r_p + d_{cr} r_p r_r & b_c + r_s^2 d_{sc} + d_{cr} r_r^2 & r_r & -d_{cr} r_r^2 \\ 0 & 0 & -r_p & -r_r & 0 & r_r \\ 0 & 0 & -d_{cr} r_p r_r & -d_{cr} r_r^2 & -r_r & b_r + d_{cr} r_r^2 \end{bmatrix}}_{\bar{\mathbf{A}}} \underbrace{\begin{bmatrix} \omega_s \\ F_{sc} \\ \omega_p \\ \omega_c \\ F_{cr} \\ \omega_r \end{bmatrix}}_{\bar{\mathbf{x}}} + \underbrace{\begin{bmatrix} 1 & 0 & 0 \\ 0 & 0 & 0 \\ 0 & 0 & 0 \\ 0 & 1 & 0 \\ 0 & 0 & 0 \\ 0 & 0 & 1 \end{bmatrix}}_{\bar{\mathbf{B}}} \underbrace{\begin{bmatrix} \tau_s \\ \tau_c \\ \tau_r \end{bmatrix}}_{\mathbf{u}}$$

Figure 7. The POG state space dynamic model of the considered planetary gear: only the inputs τ_s , τ_c and τ_r have been considered.

congruent transformation:

$$\bar{\mathbf{x}} = \mathbf{T}_1 \mathbf{x}, \quad \text{where} \quad \mathbf{T}_1 = \begin{bmatrix} 1 & 0 & 0 & 0 & 0 & 0 \\ 0 & 0 & 0 & 0 & 0 & 1 \\ 0 & 0 & 1 & 0 & 0 & 0 \\ 0 & 1 & 0 & 0 & 0 & 0 \\ 0 & 0 & 0 & 0 & 1 & 0 \\ 0 & 0 & 0 & 1 & 0 & 0 \end{bmatrix}.$$

one easily obtains the following transformed system:

$$\underbrace{\begin{bmatrix} \mathbf{J}_1 & 0 & 0 \\ 0 & \mathbf{J}_2 & 0 \\ 0 & 0 & 0 \end{bmatrix}}_{\bar{\mathbf{L}}} \underbrace{\begin{bmatrix} \dot{\mathbf{x}}_1 \\ \dot{\mathbf{x}}_2 \\ \dot{\mathbf{x}}_3 \end{bmatrix}}_{\dot{\bar{\mathbf{x}}}} = - \underbrace{\begin{bmatrix} \mathbf{A}_{11} & \mathbf{A}_{12} & \mathbf{A}_{13} \\ \mathbf{A}_{21} & \mathbf{A}_{22} & \mathbf{A}_{23} \\ \mathbf{A}_{31} & \mathbf{A}_{32} & 0 \end{bmatrix}}_{\bar{\mathbf{A}}} \underbrace{\begin{bmatrix} \mathbf{x}_1 \\ \mathbf{x}_2 \\ \mathbf{x}_3 \end{bmatrix}}_{\bar{\mathbf{x}}} + \underbrace{\begin{bmatrix} \mathbf{B}_1 \\ \mathbf{B}_2 \\ 0 \end{bmatrix}}_{\bar{\mathbf{B}}} \mathbf{u} \quad (4)$$

where $\mathbf{x} = \mathbf{T}_1^T \bar{\mathbf{x}}$, $\mathbf{L} = \mathbf{T}_1^T \bar{\mathbf{L}} \mathbf{T}_1$, $\mathbf{B} = \mathbf{T}_1^T \bar{\mathbf{B}}$ and $\mathbf{A} = \mathbf{T}_1^T \bar{\mathbf{A}} \mathbf{T}_1$ and where:

$$\begin{aligned} \mathbf{x}_1 &= \begin{bmatrix} \omega_s \\ \omega_c \end{bmatrix}, \quad \mathbf{x}_2 = \begin{bmatrix} \omega_p \\ \omega_r \end{bmatrix}, \quad \mathbf{x}_3 = \begin{bmatrix} F_{cr} \\ F_{sc} \end{bmatrix}, \quad \mathbf{J}_1 = \begin{bmatrix} J_s & 0 \\ 0 & J_c \end{bmatrix}, \quad \mathbf{J}_2 = \begin{bmatrix} J_p & 0 \\ 0 & J_r \end{bmatrix}, \\ \mathbf{B}_1 &= \begin{bmatrix} 1 & 0 & 0 \\ 0 & 1 & 0 \end{bmatrix}, \quad \mathbf{B}_2 = \begin{bmatrix} 0 & 0 & 0 \\ 0 & 0 & 1 \end{bmatrix}, \quad \mathbf{A}_{11} = \begin{bmatrix} b_s + r_s^2 d_{sc} & -r_s^2 d_{sc} \\ -r_s^2 d_{sc} & b_c + r_s^2 d_{sc} + d_{cr} r_r^2 \end{bmatrix}, \\ \mathbf{A}_{12} &= \begin{bmatrix} r_s d_{sc} r_p & 0 \\ -r_s d_{sc} r_p + d_{cr} r_p r_r & -d_{cr} r_r^2 \end{bmatrix}, \quad \mathbf{A}_{13} = \begin{bmatrix} 0 & r_s \\ r_r & -r_s \end{bmatrix}, \quad \mathbf{A}_{31} = \begin{bmatrix} 0 & -r_r \\ -r_s & r_s \end{bmatrix}, \\ \mathbf{A}_{21} &= \begin{bmatrix} r_s d_{sc} r_p & -r_s d_{sc} r_p + d_{cr} r_p r_r \\ 0 & -d_{cr} r_r^2 \end{bmatrix}, \quad \mathbf{A}_{23} = \begin{bmatrix} r_p r_p \\ -r_r & 0 \end{bmatrix}, \\ \mathbf{A}_{22} &= \begin{bmatrix} b_p + d_{sc} r_p^2 + d_{cr} r_p^2 & -d_{cr} r_p r_r \\ -d_{cr} r_p r_r & b_r + d_{cr} r_r^2 \end{bmatrix}, \quad \mathbf{A}_{32} = \begin{bmatrix} -r_p & r_r \\ -r_r & 0 \end{bmatrix}, \end{aligned}$$

The last equation of system (4) is an algebraic relation between the state variables: $\mathbf{A}_{31} \mathbf{x}_1 + \mathbf{A}_{32} \mathbf{x}_2 = 0$. Since matrix \mathbf{A}_{32} is invertible, vector \mathbf{x}_2 can be expressed as

follows: $\mathbf{x}_2 = -\mathbf{A}_{32}^{-1} \mathbf{A}_{31} \mathbf{x}_1$. Applying to system (4) the following “rectangular” transformation:

$$\mathbf{x} = \mathbf{T}_2 \mathbf{x}_1 \quad \text{where} \quad \mathbf{T}_2 = \begin{bmatrix} \mathbf{I}_2 \\ -\mathbf{A}_{32}^{-1} \mathbf{A}_{31} \\ 0 \end{bmatrix} = \begin{bmatrix} 1 & 0 \\ 0 & 0 \\ -\frac{r_s}{r_p} & \frac{r_s}{r_r} \\ -\frac{r_s}{r_r} & 1 + \frac{r_s}{r_r} \\ 0 & 0 \\ 0 & 0 \end{bmatrix}$$

one obtains the following transformed and reduced system:

$$\mathbf{L}_r \dot{\mathbf{x}}_1 = -\mathbf{A}_r \mathbf{x}_1 + \mathbf{B}_r \mathbf{u}, \quad \mathbf{y} = \mathbf{B}_r^T \mathbf{x}_1 \quad (5)$$

where

$$\begin{aligned} \mathbf{L}_r &= \begin{bmatrix} J_s + \frac{r_s^2}{r_p^2} J_p + \frac{r_s^2}{r_r^2} J_r & -\frac{r_s^2}{r_p^2} J_p - \frac{r_s}{r_r} \left(1 + \frac{r_s}{r_r}\right) J_r \\ -\frac{r_s^2}{r_p^2} J_p - \frac{r_s}{r_r} \left(1 + \frac{r_s}{r_r}\right) J_r & J_c + \frac{r_s^2}{r_p^2} J_p + \left(1 + \frac{r_s}{r_r}\right)^2 J_r \end{bmatrix} \\ \mathbf{A}_r &= \begin{bmatrix} b_s + \frac{r_s^2}{r_p^2} b_p + \frac{r_s^2}{r_r^2} b_r & -\frac{r_s^2}{r_p^2} b_p - \frac{r_s}{r_r} \left(1 + \frac{r_s}{r_r}\right) b_r \\ -\frac{r_s^2}{r_p^2} b_p - \frac{r_s}{r_r} \left(1 + \frac{r_s}{r_r}\right) b_r & b_c + \frac{r_s^2}{r_p^2} b_p + \left(1 + \frac{r_s}{r_r}\right)^2 b_r \end{bmatrix} \\ \mathbf{B}_r &= \begin{bmatrix} 1 & 0 & -\frac{r_s}{r_r} \\ 0 & 1 & 1 + \frac{r_s}{r_r} \end{bmatrix}, \quad \mathbf{x}_1 = \begin{bmatrix} \omega_s \\ \omega_c \end{bmatrix}, \quad \mathbf{y} = \begin{bmatrix} \omega_s \\ \omega_c \end{bmatrix} \end{aligned}$$

and $\omega_r = \omega_c + \frac{r_s}{r_r}(\omega_c - \omega_s)$. Note: the possibility of using a rectangular matrix \mathbf{T}_2 for transforming and reducing at the same time a dynamical system is a peculiar characteristics of the POG technique and it holds only for system described in the POG form (1). A simulative comparison between the extended and the reduced models of the planetary gear is

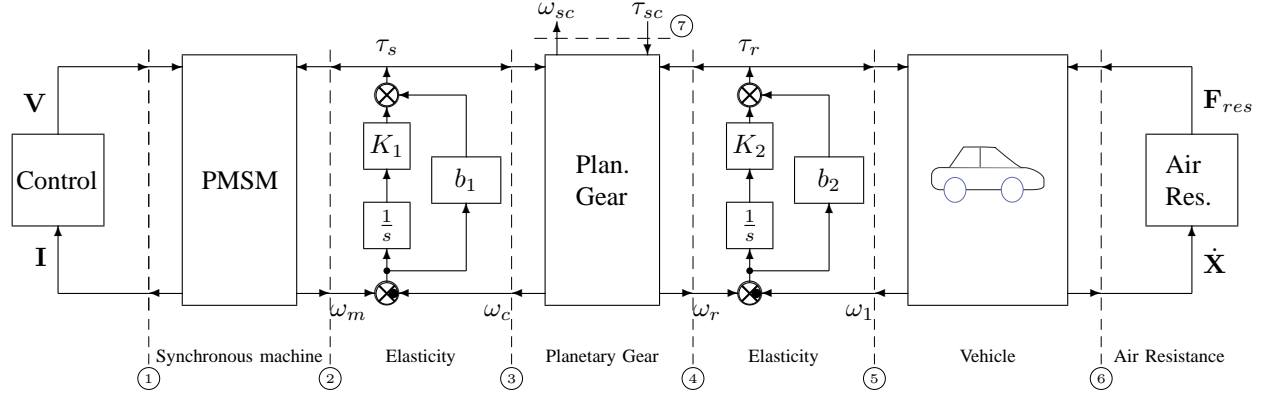


Figure 8. POG graphical representation of the considered hybrid vehicle.

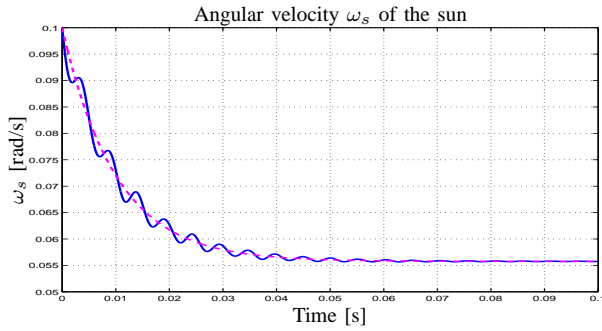


Figure 9. Simulative comparison between the extended and the reduced model of the planetary gear.

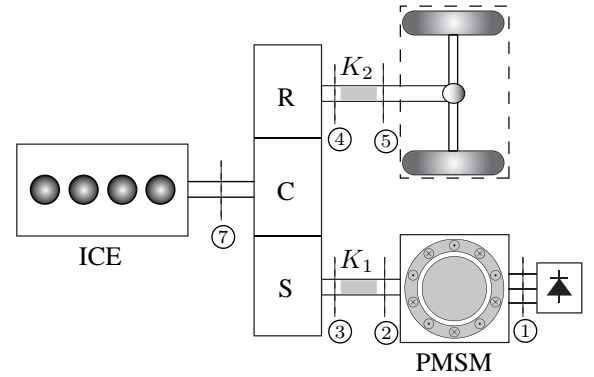


Figure 11. Scheme of the considered power structure of the vehicle

shown in Fig. 9 (The simulation details of this figure will be given in the final paper).

With different choices of matrix \mathbf{T}_1 it is possible to obtain different but equivalent reduced systems, similar to (5), with different state variables in vector \mathbf{x}_1 , for example $\mathbf{x}_1 = [\omega_s \ \omega_r]^T$, $\mathbf{x}_1 = [\omega_r \ \omega_c]^T$, etc. Using the POG reduction technique it is also possible to obtain from (5) the reduced static model of the planetary gear when all the inertias J_s , J_c , J_p and J_r go to zero. The details of this last transformation will be given in the final version of this paper.

IV. POG MODELING OF AN HYBRID AUTOMOTIVE SYSTEM

The planetary gear is the key element for modeling the hybrid powertrain structure shown in Fig. 11. The considered structure includes an internal combustion engine (ICE) and a multi-phase permanent magnet synchronous machine (PMSM). The planetary gear is the element connecting the two motors and the driving wheels. The ICE is rigidly connected to the Carrier (C), the PMSM is connected to the Sun (S) by means of an elastic element K_1 and the vehicle driving axle is connected to the Ring (R) by means of an elastic element K_2 . This hybrid system can be dynamically described by the “high level” POG block scheme shown in Fig. 8. Note that the POG power sections ①- ⑦ shown in Fig. 8 correspond to the physical power sections indicated in Fig. 11. The first POG block of Fig. 8 represents the electric control of the

PMSM. The POG model of the synchronous machine present between sections ① and ② is given in Fig. 12, see [4] and [5]. The elaboration block between sections ② and ③ represents the elasticity of the shaft connecting the electric motor to the Planetary Gear Sun. The POG model of the Planetary Gear present between sections ③ and ④ is given in Fig. 6. The corresponding POG reduced model proposed in Sec. III can also be used. The planetary gear is connected to the driving shaft of the vehicle through the elastic element present between sections ④ and ⑤. The dynamics of the vehicle is described by the POG block present between sections ⑤ and ⑥, see the POG model given in [6]. Finally the resistance of the air is described by the last POG block.

Further details of this hybrid system will be given in the final version of this paper.

V. SIMULATION

The system shown in Fig. 11 has been implemented in Matlab/Simulink as it is shown in Fig. 10. All subsystems have been modeled with POG and in particular the vehicle subsystem in the right part of the scheme is a bicycle model of a car that includes the tire-road elastic interaction, see [6].

A full set of simulation results of the controlled hybrid system will be given in the final version of the paper.

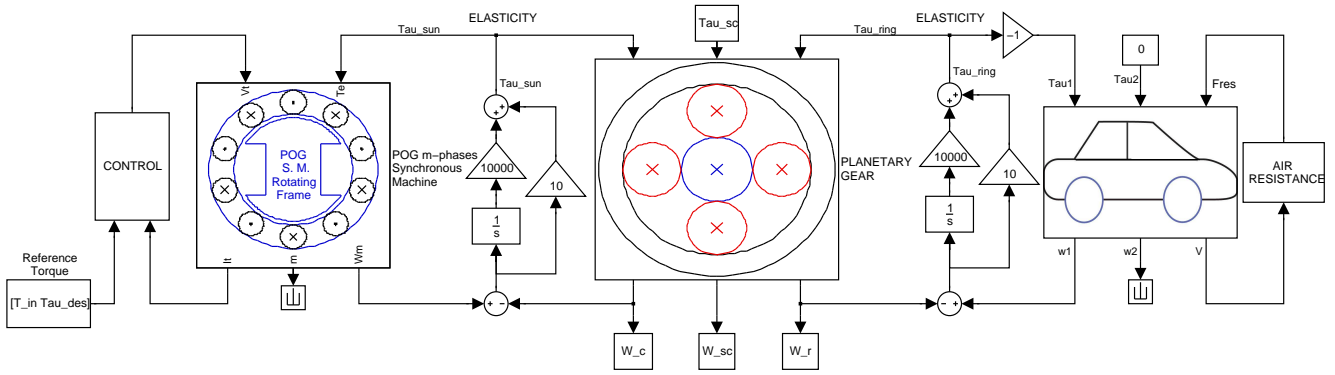


Figure 10. Simulink block scheme of the considered hybrid power structure.

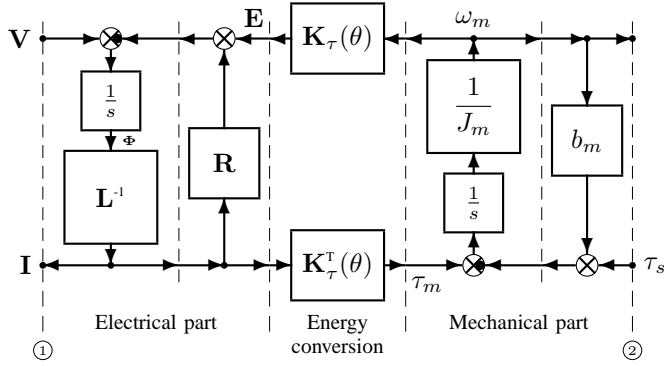


Figure 12. POG scheme of the multi-phase synchronous motor (PMSM).

REFERENCES

- [1] R. Zanasi, "Power Oriented Modelling of Dynamical System for Simulation", IMACS Symp. on Modelling and Control of Technological System, Lille, France, May 1991.
- [2] Zanasi R., "Dynamics of a n -links Manipulator by Using Power-Oriented Graph", SYROCO '94, Capri, Italy, 1994.
- [3] D. C. Karnopp, D.L. Margolis, R. C. Rosenberg, *System dynamics - Modeling and Simulation of Mechatronic Systems*, Wiley Interscience, ISBN 0-471-33301-8, 3rd ed. 2000.
- [4] R. Zanasi, F. Grossi, "Multi-phase Synchronous Motors: POG Modeling and Optimal Shaping of the Rotor Flux", ELECTRIMACS 2008, Québec, Canada, June 2008.
- [5] R. Zanasi, F. Grossi "Optimal Rotor Flux Shape for Multi-phase Permanent Magnet Synchronous Motors", International Power Electronics and Motion Control Conference, September 1-3 2008, Poznan, Poland.
- [6] F. Grossi, W. Lhomme, R. Zanasi, A. Bouscayrol, "Modelling and control of a vehicle with tire-road interaction using POG and EMR formalisms", accepted to Electromotion 2009, EPE chapter Electric Drives, 1-3 July 2009, Lille, France